

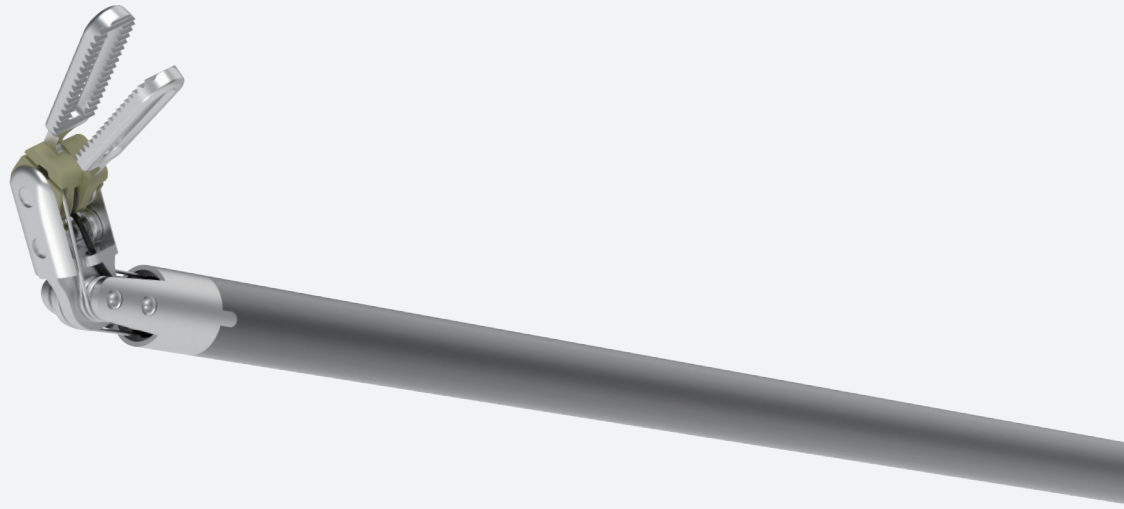
ARTISENTIAL

Articulating Laparoscopic Instrument



reddot design award
winner 2019

LIV'SMED
www.livsmed.com



ARTISENTIAL
Articulating Laparoscopic Instrument



Bipolar Fenestrated Forceps

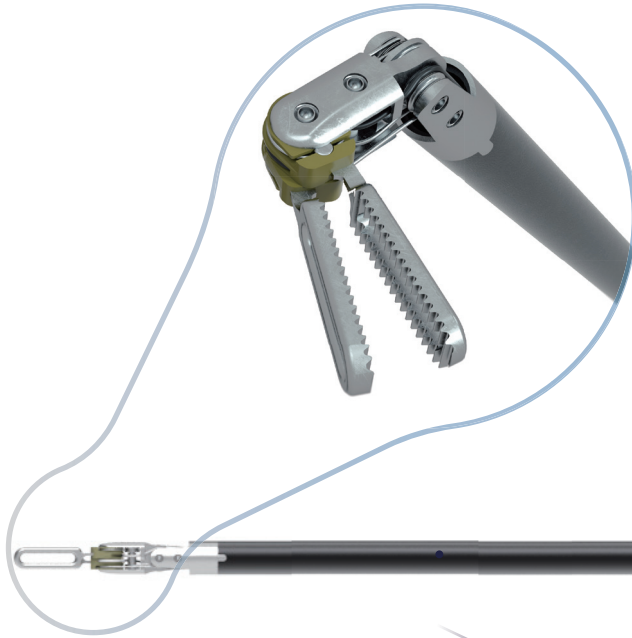
ArtiSential is A blending of two words Articulation and Essential.

Our multi-joint-end-effectors allow for articulation that is essential for accessing narrow surgical sites and precision surgery.

One word that can describe 'ArtiSential' is its 'intuitiveness'. The movement of the user's hand, wrist, and fingers are synchronized with the corresponding movements of the end-effector.

ARTISENTIAL

Articulating Laparoscopic Instrument



| Multi-joint-end-effector

- Provides 360 degrees of freedom enabling various angles of approach to the surgical site.
- Matches the delicate movements of user's hands.

| Shaft

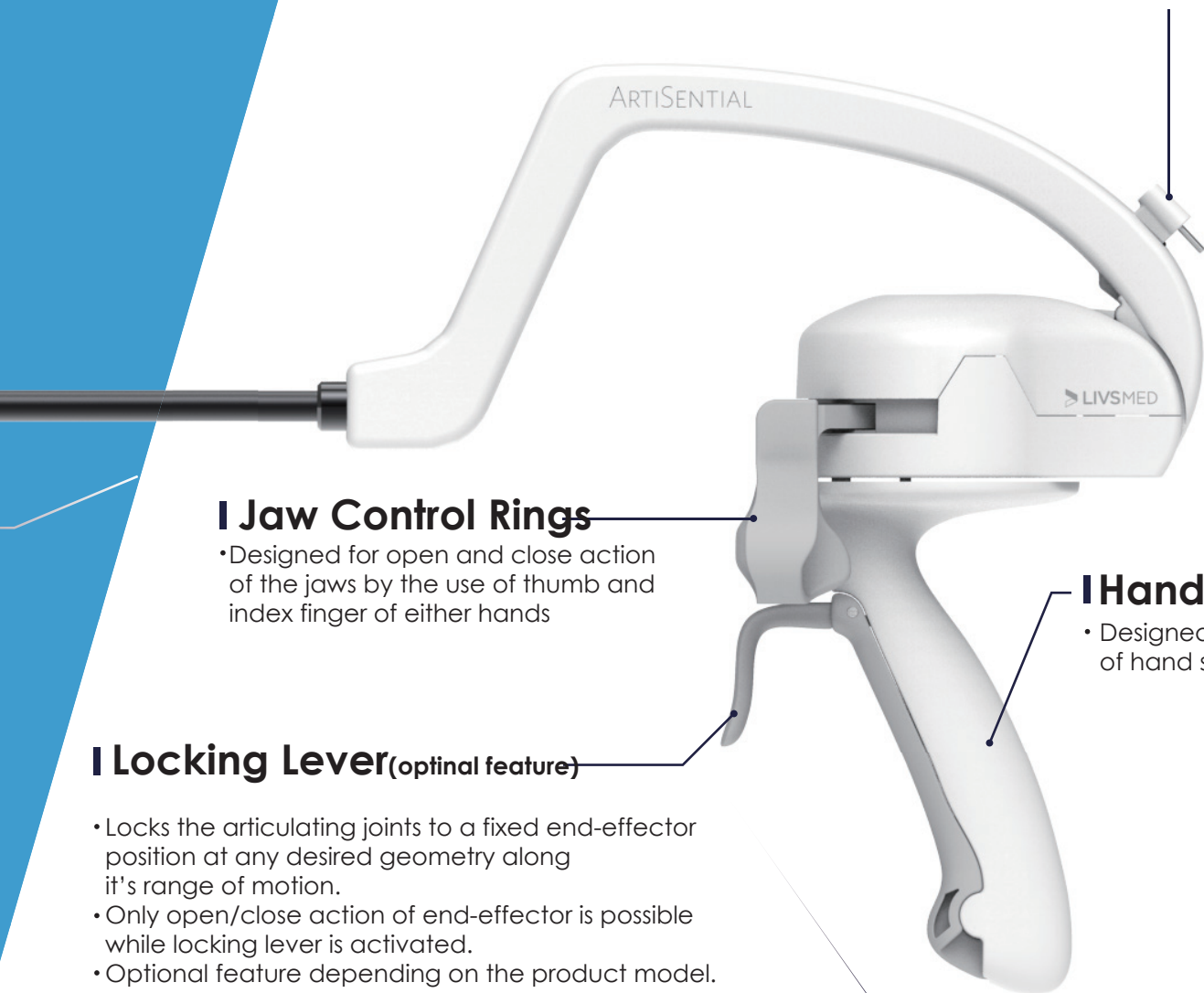
- Available in 3 shaft lengths (25cm, 38cm, 45cm)

Introducing ArtiSential

With the ArtiSential, double-joint structure as well as intuitive control enables precise access to complex and difficult-to-reach surgical spaces with 360° of fully wristed articulation.

I Electrode

- Bipolar or Monopolar depending on the product mode



I Jaw Control Rings

- Designed for open and close action of the jaws by the use of thumb and index finger of either hands

I Hand Grip

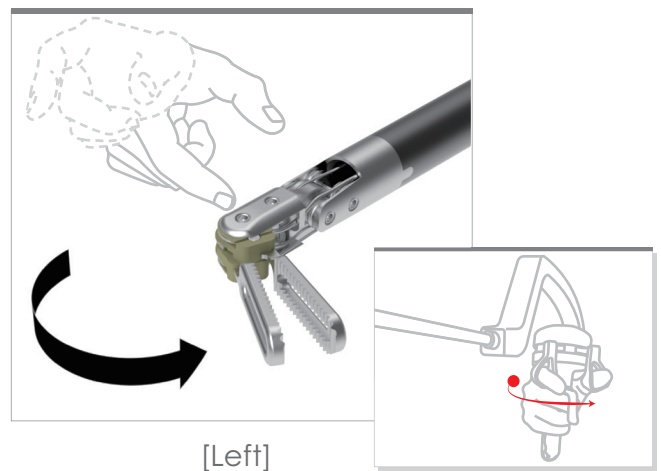
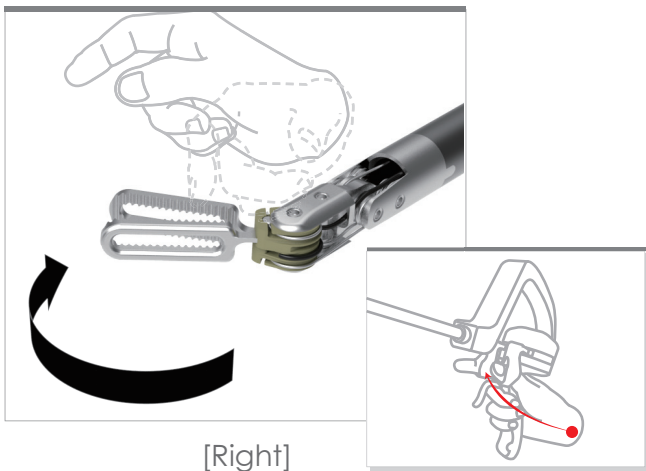
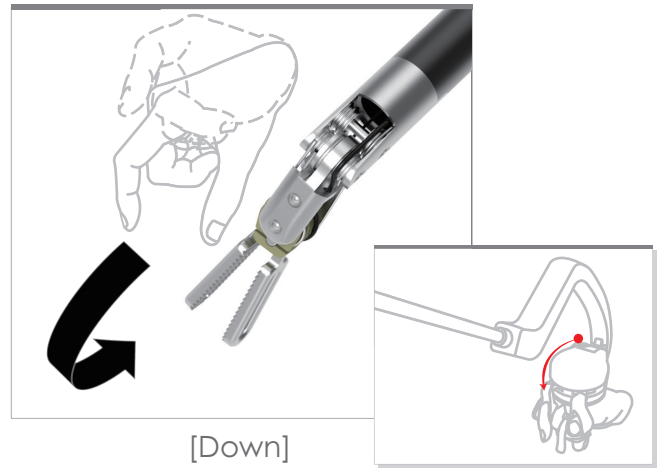
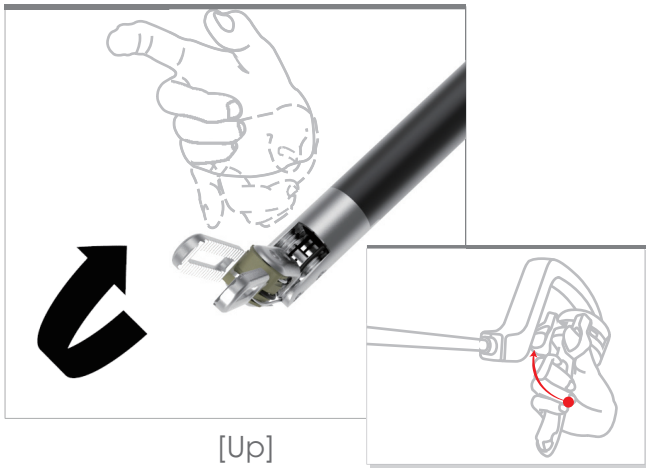
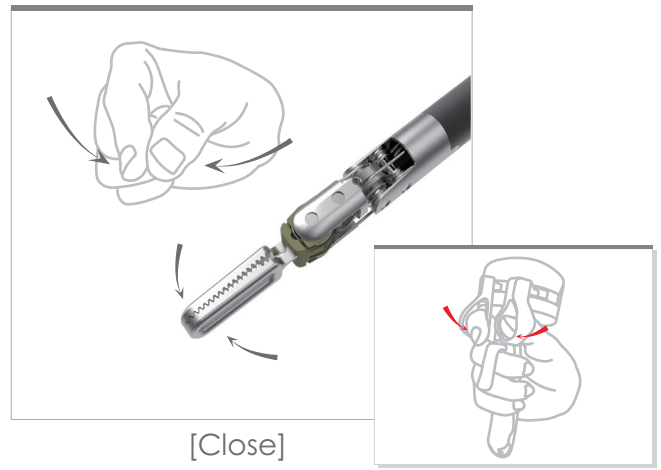
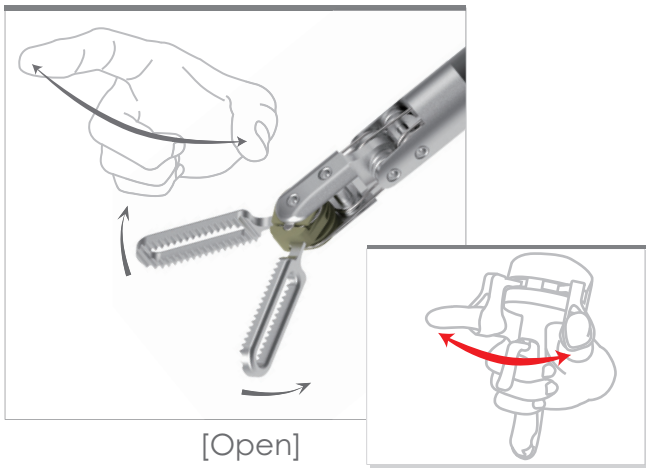
- Designed to fit wide range of hand sizes

I Locking Lever (optinal feature)

- Locks the articulating joints to a fixed end-effector position at any desired geometry along it's range of motion.
- Only open/close action of end-effector is possible while locking lever is activated.
- Optional feature depending on the product model.

I Ergonomic Design

- Provides intuitive, highly Flexible articulating control



Articulation Is Essential

Synchronized movement between end-effector and user's hand

ArtiSential's end-effectors have both a vertical and horizontal joint structure that are synchronized with the delicate movements of the user's hands. This allows for greater access to narrow surgical sites. Its multiple degrees of movement allows the users to perform more complex techniques and a wider variety of surgical procedures than those with rigid or straight instruments.

ARTISENTIAL

Articulating Laparoscopic Instrument

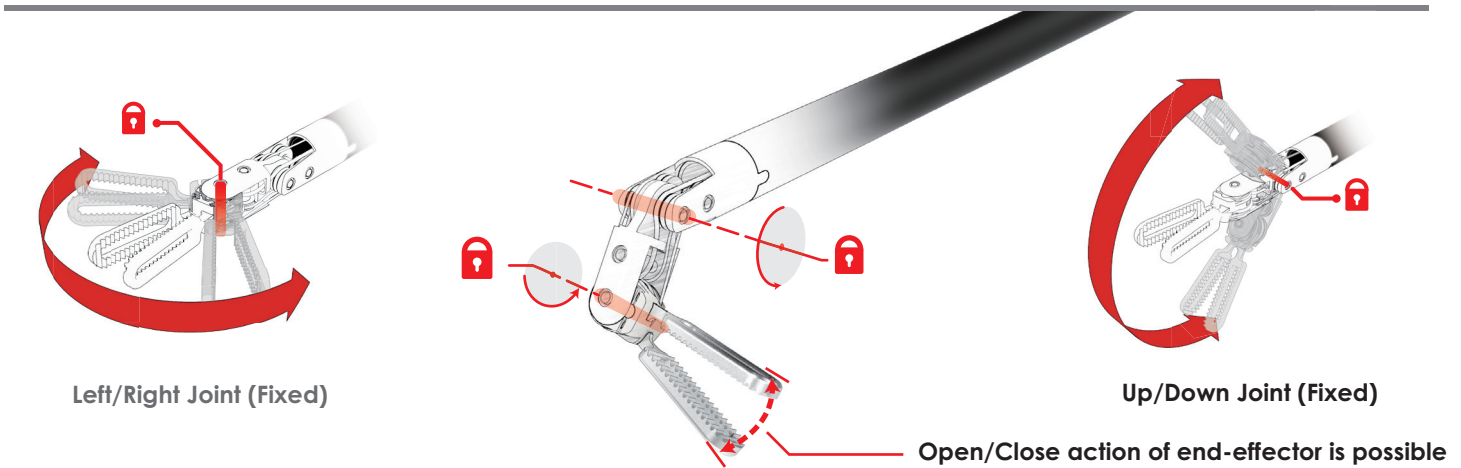


Push the **1** lever outward
The **2** lever goes down and activates the lock

Pull the **1** lever inward until
the **2** lever clicks and deactivates the lock

Activating the locking feature

Deactivating the locking feature



Left/Right Joint (Fixed)

Up/Down Joint (Fixed)

Open/Close action of end-effector is possible

When the locking feature is activated UP/DOWN, LEFT/RIGHT articulating joint is fixed and cannot move, but OPEN/CLOSE action of end-effector is possible.

ADVANTAGES



360 degrees of freedom provides access to narrow spaces

ArtiSential's double-joint structure of the end-effector allows the instrument to move with 360 degrees of freedom, which enables various angles of approach to the surgical site and also serves to mimic the functions of the human hand.



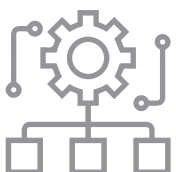
Intuitive Control

ArtiSential's end-effector movement matches with the user's fingers and wrist movements to enable intuitive manipulation and control. Its highly flexible and articulating performance is not available with conventional instruments.



Various line-up

ArtiSential offers a complete line of instruments to include a Bipolar forceps, Bipolar Dissector, Needle Holder, Clip Applier, Monopolar Hook, Monopolar Scissor, etc.






Replacement of existing instruments, pioneering new surgical procedure








ArtiSential can be used in the existing surgical environment without any additional device, capital system, or footprint. ArtiSential leads to immediate capabilities.



LIVSMED

ArtiSential Instruments

ITEM CODE	PRODUCT DESCRIPTION	JAW LENGTH	SHAFT DIAMETER	SHAFT LENGTH	LOCK	ELECTRODE	UNITS/BOX	USES
▶ Fenestrated Forceps								
	AUF01-F Fenestrated Forceps-38cm			38cm	N/A			
	AUF01-L Fenestrated Forceps-38cm-Lock			38cm	O			
	AUF01S-F Fenestrated Forceps-25cm	18mm	8mm	25cm	N/A	N/A	1EA/BOX	Single Use
	AUF01S-L Fenestrated Forceps-25cm-Lock			25cm	O			
	AUF01L-F Fenestrated Forceps-45cm			45cm	N/A			
	AUF01L-L Fenestrated Forceps-45cm-Lock			45cm	O			
▶ Bipolar Fenestrated Forceps								
	ABF01-F Bipolar Fenestrated Forceps-38cm			38cm	N/A			
	ABF01-L Bipolar Fenestrated Forceps-38cm-Lock			38cm	O			
	ABF01S-F Bipolar Fenestrated Forceps-25cm	18mm	8mm	25cm	N/A	Bipolar	1EA/BOX	Single Use
	ABF01S-L Bipolar Fenestrated Forceps-25cm-Lock			25cm	O			
	ABF01L-F Bipolar Fenestrated Forceps-45cm			45cm	N/A			
	ABF01L-L Bipolar Fenestrated Forceps-45cm-Lock			45cm	O			
▶ Maryland Dissector								
	AUD01-F Maryland Dissector-38cm			38cm	N/A			
	AUD01-L Maryland Dissector-38cm-Lock			38cm	O			
	AUD01S-F Maryland Dissector-25cm	20mm	8mm	25cm	N/A	N/A	1EA/BOX	Single Use
	AUD01S-L Maryland Dissector-25cm-Lock			25cm	O			
	AUD01L-F Maryland Dissector-45cm			45cm	N/A			
	AUD01L-L Maryland Dissector-45cm-Lock			45cm	O			

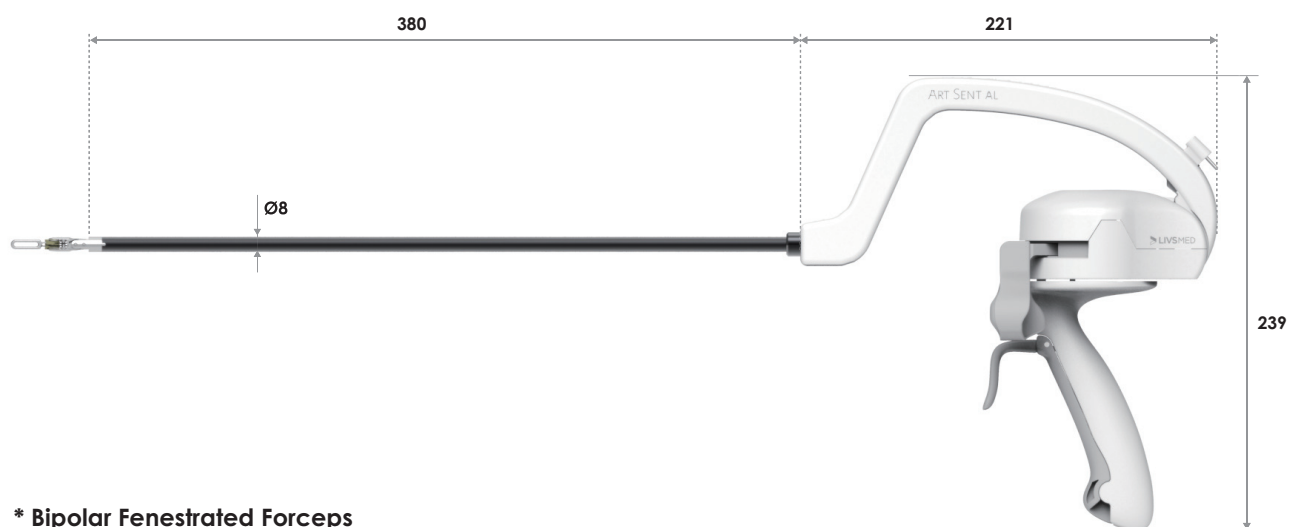
ITEM CODE	PRODUCT DESCRIPTION	JAW LENGTH	SHAFT DIAMETER	SHAFT LENGTH	LOCK	ELECTRODE	UNITS/BOX	USES
▶ Bipolar Maryland Dissector								
	ABD01-F	Bipolar Maryland Dissector-38cm		38cm	N/A	Bipolar		
	ABD01-L	Bipolar Maryland Dissector-38cm-Lock		38cm	O	Bipolar		
	ABD01S-F	Bipolar Maryland Dissector-25cm		25cm	N/A	Bipolar		
	ABD01S-L	Bipolar Maryland Dissector-25cm-Lock	20mm	8mm	25cm	O	1EA/BOX	Single Use
	ABD01L-F	Bipolar Maryland Dissector-45cm		45cm	N/A	Bipolar		
	ABD01L-L	Bipolar Maryland Dissector-45cm-Lock		45cm	O	Bipolar		
▶ Bipolar Precise Dissector								
	ABD02-F	Bipolar Precise Dissector-38cm		38cm	N/A	Bipolar		
	ABD02-L	Bipolar Precise Dissector-38cm-Lock		38cm	O	Bipolar		
	ABD02S-F	Bipolar Precise Dissector-25cm		25cm	N/A	Bipolar		
	ABD02S-L	Bipolar Precise Dissector-25cm-Lock	17mm	8mm	25cm	O	1EA/BOX	Single Use
	ABD02L-F	Bipolar Precise Dissector-45cm		45cm	N/A	Bipolar		
	ABD02L-L	Bipolar Precise Dissector-45cm-Lock		45cm	O	Bipolar		
▶ Bipolar Curved Dissector								
	ABD03-F	Bipolar Curved Dissector-38cm		38cm	N/A	Bipolar		
	ABD03-L	Bipolar Curved Dissector-38cm-Lock		38cm	O	Bipolar		
	ABD03S-F	Bipolar Curved Dissector-25cm		25cm	N/A	Bipolar		
	ABD03S-L	Bipolar Curved Dissector-25cm-Lock	19mm	8mm	25cm	O	1EA/BOX	Single Use
	ABD03L-F	Bipolar Curved Dissector-45cm		45cm	N/A	Bipolar		
	ABD03L-L	Bipolar Curved Dissector-45cm-Lock		45cm	O	Bipolar		
▶ Needle Holder								
	ANH01-F	Needle Holder-38cm		38cm	N/A			
	ANH01-L	Needle Holder-38cm-Lock		38cm	O			
	ANH01S-F	Needle Holder-25cm		25cm	N/A	N/A		
	ANH01S-L	Needle Holder-25cm-Lock	12mm	8mm	25cm	O	1EA/BOX	Single Use
	ANH01L-F	Needle Holder-45cm		45cm	N/A			
	ANH01L-L	Needle Holder-45cm-Lock		45cm	O			
▶ Precise Needle Holder								
	ANH02-F	Precise Needle Holder-38cm		38cm	N/A			
	ANH02-L	Precise Needle Holder-38cm-Lock		38cm	O			
	ANH02S-F	Precise Needle Holder-25cm		25cm	N/A	N/A		
	ANH02S-L	Precise Needle Holder-25cm-Lock	9mm	8mm	25cm	O	1EA/BOX	Single Use
	ANH02L-F	Precise Needle Holder-45cm		45cm	N/A			
	ANH02L-L	Precise Needle Holder-45cm-Lock		45cm	O			
▶ Clip Applier Medium Large								
	ACA01-F	Clip Applier Medium Large		38cm	N/A			
	ACA01-L	Clip Applier Medium Large-Lock		38cm	O			
	ACA01S-F	Clip Applier Medium Large		25cm	N/A	N/A		
	ACA01S-L	Clip Applier Medium Large-Lock	19mm	8mm	25cm	O	1EA/BOX	Single Use
	ACA01L-F	Clip Applier Medium Large		45cm	N/A			
	ACA01L-L	Clip Applier Medium Large-Lock		45cm	O			
▶ Monopolar Spatula								
	AMT01-F	Monopolar Spatula-38cm		38cm	N/A			
	AMT01-L	Monopolar Spatula-38cm-Lock		38cm	O			
	AMT01S-F	Monopolar Spatula-25cm		25cm	N/A			
	AMT01S-L	Monopolar Spatula-25cm-Lock	5mm	8mm	25cm	O	1EA/BOX	Single Use
	AMT01L-F	Monopolar Spatula-45cm		45cm	N/A			
	AMT01L-L	Monopolar Spatula-45cm-Lock		45cm	O			

ITEM CODE	PRODUCT DESCRIPTION	JAW LENGTH	SHAFT DIAMETER	SHAFT LENGTH	LOCK	ELECTRODE	UNITS/BOX	USES
AMHD01-F	Monopolar Hook-Down-38cm			38cm	N/A			
AMHD01-L	Monopolar Hook-Down-38cm-Lock			38cm	O			
AMHD01S-F	Monopolar Hook-Down-25cm			25cm	N/A			
AMHD01S-L	Monopolar Hook-Down-25cm-Lock			25cm	O			
AMHD01L-F	Monopolar Hook-Down-45cm			45cm	N/A			
AMHD01L-L	Monopolar Hook-Down-45cm-Lock			45cm	O			
AMHU01-F	Monopolar Hook-Up-38cm			38cm	N/A			
AMHU01-L	Monopolar Hook-Up-38cm-Lock			38cm	O			
AMHU01S-F	Monopolar Hook-Up-25cm			25cm	N/A			
AMHU01S-L	Monopolar Hook-Up-25cm-Lock			25cm	O			
AMHU01L-F	Monopolar Hook-Up-45cm			45cm	N/A			
AMHU01L-L	Monopolar Hook-Up-45cm-Lock			45cm	O			
AMHR01-F	Monopolar Hook-Right-38cm	8mm	8mm	38cm	N/A	Monopolar	1EA/BOX	Single Use
AMHR01-L	Monopolar Hook-Right-38cm-Lock			38cm	O			
AMHR01S-F	Monopolar Hook-Right-25cm			25cm	N/A			
AMHR01S-L	Monopolar Hook-Right-25cm-Lock			25cm	O			
AMHR01L-F	Monopolar Hook-Right-45cm			45cm	N/A			
AMHR01L-L	Monopolar Hook-Right-45cm-Lock			45cm	O			
AMHL01-F	Monopolar Hook-Left-38cm			38cm	N/A			
AMHL01-L	Monopolar Hook-Left-38cm-Lock			38cm	O			
AMHL01S-F	Monopolar Hook-Left-25cm			25cm	N/A			
AMHL01S-L	Monopolar Hook-Left-25cm-Lock			25cm	O			
AMHL01L-F	Monopolar Hook-Left-45cm			45cm	N/A			
AMHL01L-L	Monopolar Hook-Left-45cm-Lock			45cm	O			



Articulating Laparoscopic Instrument

SPECIFICATIONS



* Bipolar Fenestrated Forceps




ARTISENTIAL
Articulating Laparoscopic Instrument

LIVSMED | www.livsmed.com |

LIVSMED (KOREA) | **Email.** info@livsmed.com

DISTRIBUTORE PER L'ITALIA

 **JOINT MEDICAL**
REAL INNOVATION

Joint Medical Srl - Via F. Turati, 74 - 00015 Monterotondo (RM)
 +39 06 39366066  info@jointmedical.it  www.jointmedical.it

For more information on approved product for sale in your market, please contact your LIVSMED representative or your local distributor.